

# NEWS

## NEW COVENT GARDEN SITES



New CGI view of Nine Elms and New Covent Garden Sites from the north

## The new market begins to take shape

We kicked off the project in 2015 but 2016 is the year when things really start to happen.

Construction work has already begun to build the brand new Flower Market next to the current Main Entrance on Nine Elms Lane. You will have seen the new hoardings are up and the construction started in earnest in February. The site has been cleared and piles that support the structure are in place. As the steelwork goes up the new Flower Market will begin to take shape.

The flower businesses will move to their new home in January 2017. The new Flower Market will be at the Main Entrance site until autumn 2022, when it will move to its permanent home at the front of the new market.

We have also began the construction works for our new Entrance Plaza, which moves south of the railway, ready to open later in the summer.



New Flower Market Steel Framework begins



New Flower Market cut-away illustration



New Market Entrance Plaza

## IN BRIEF

### An 'Edible Avenue' comes to site

See how Thessaly Road will join the transformation.

### New hoarding displays give a fresh glimpse of the brand new future



visit [www.newcoventgardensites.com](http://www.newcoventgardensites.com)

for an overview of the project and further info on the individual construction phases.



Nine Elms  
On the South Bank

# THESSALY ROAD TRANSFORMED INTO EDIBLE AVENUE - A CELEBRATION OF FRESH PRODUCE



Developers VINCI St. Modwen are working with the The Edible Bus Stop, the London based award-winning collective, comprising of landscape architects, garden designers, horticulturists, artists and activists, to animate the boundary of the New Covent Garden Market redevelopment site and engage with the local community.

VSM decided to support the 'Edible Avenue' in response to community feedback which indicated that greening the area and making the wall in Thessaly Road less of an eyesore was a priority. The aim is to improve spaces around New Covent Garden Market for the benefit of the existing community and reflect the transformation that is happening in and around the new market.



The concept is to transform the existing brick wall that runs the length of Thessaly Road, which currently creates a hard and distinct boundary between The Covent Garden Market site, and Thessaly Road.

The plan is to add colour and planters with built-in seats along sections of the wall, breaking up the current blandness, making it a far more pleasant place to walk along and pass through.

The Edible Bus Stop, in a nod towards the fresh produce that comes in and out of the market on a daily basis, will build on the history of the area's market gardens and use the growing of edibles and ornamentals to connect the market with the surrounding area and neighbourhoods.

The design features a traditional white picket fence, which will emerge from the boundary wall, and arc and fold into a series of planted interventions and curves to form areas of seating. The fence will seem to appear and disappear through the wall, providing interactive and sculptural elements at key locations along the length of the existing boundary.

The curved picket fence gardens will feature a mixture of deciduous and evergreen trees, mainly fruiting varieties. Interspersed with fruit bushes, trailing plants, edible flowers and herbs planted throughout and as under planting to the trees.

The wall will be painted in uplifting colours, transforming it from its current imposing dark brick. Line drawings along the length of the wall will further reflect the area's vibrant history and community. These will be augmented over the coming months by work being undertaken by St George's Church of England Primary School as part of the 'CULTIVATE' Cultural Education Challenge.

On Saturday 21st May we held our first community involvement event: POT IT UP @ St George's School. People of all ages turned up to pot up young herbs to take away and nurture, find out more about the project.

Have your say! Your neighbourhood is growing. complete our survey at [www.surveymonkey.co.uk/r/VH6X7H8](http://www.surveymonkey.co.uk/r/VH6X7H8) or via the Edible Bus Stop website [theediblebusstop.org/thessaly-road/](http://theediblebusstop.org/thessaly-road/)

Come along, meet your neighbours, pick up a gardening tip or two and sign up to our new Edible Avenue Gardening Club!

Do some weeding, grow some seeds or help us to pot up and plant our Edible Avenue between 2-4pm on Saturday 11th and Sunday 12th June. Volunteer to help us build up our Edible Avenue installation! Further details on the websites below.

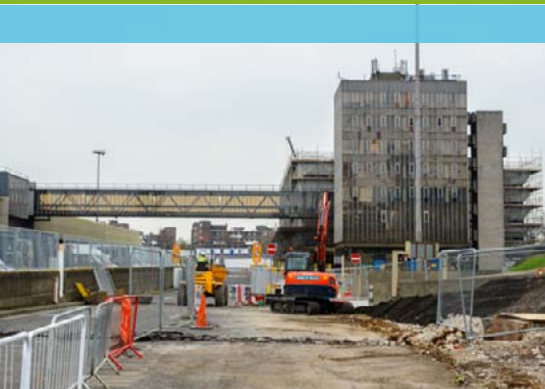
**Where** St Georges School Church of England school grounds SW8 4JS  
**When** 2-4pm Saturday 11th and Sunday 12th June

For more details about the installation and our summer planting activities [newcoventgardensites.com](http://newcoventgardensites.com) and [theediblebusstop.org/Thessaly-Road/](http://theediblebusstop.org/Thessaly-Road/)



## Hoardings

New hoardings have gone up around the site of the new Flower Market at the current main entrance. With 'a BETTER home for FRESH' as their theme, the brightly coloured hoardings are a reminder of the importance of the Market to London as a whole as well as the exciting transformation that the site is undergoing: **'The MARKET that feeds LONDON'** **'The MARKET that flowers LONDON'**



### NEW ENTRANCE PLAZA

In January work started for the construction of the market's new Entrance Plaza. In Brand New Covent Garden Market, the Entrance Plaza moves south of the railway and uses five lanes to respond efficiently to traffic. An internal road has been closed throughout this phase of construction.

The adjacent multi storey car park refurbishment work will also finish at the end of July.

## Football Pitches

On site it's impossible to miss the first new major structure of Brand New Covent Garden Market that's gone up next to the Multi-Storey Car Park.

It will house six five-a-side football pitches over the first and second floors for community use, while providing cover for the new Recycling & Waste Compound.

The steelwork is finished and the next phase will start including pouring the concrete for the first and second floors, applying the polycarbonate cladding, and building the lift and stair core.

The new Recycling & Waste Compound is due to be ready this August, while the Football Pitches structure will be ready in September for the operator to move in.



### CONTACT DETAILS

For specific information and feedback concerning construction activity on the market site please contact:

**email:** [ncgm-vcuk-liaison@4projectsmail.com](mailto:ncgm-vcuk-liaison@4projectsmail.com)  
or **tel:** 07767 006599